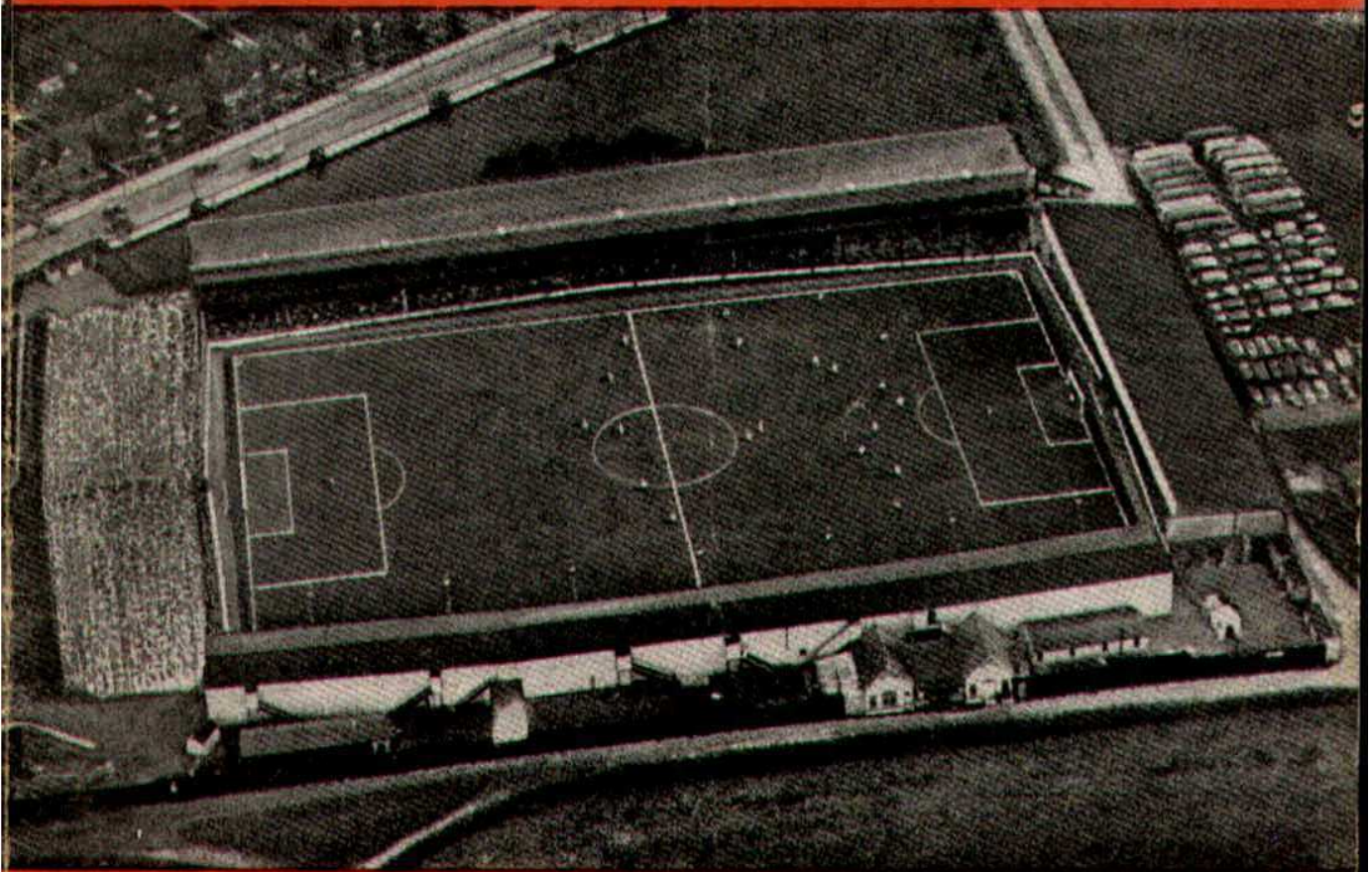




SWINDON TOWN FOOTBALL CLUB



FRIDAY, APRIL 20th, 1962

DIVISION III

SWINDON TN. v. TORQUAY U.

Kick-off 3 p.m.

Official Programme **4d.**

**SOUTHERN LAUNDRY
CO. LTD.**

Launderers and Dry Cleaners

TELEPHONE 4161

STATION RD., SWINDON

GO MODERN — GO ELECTRIC
for
TELEVISION, RADIO AND
DOMESTIC APPLIANCES

D. ROBSON

22 HAVELOCK STREET

6602

Swindon

6602

Make your Goal the

EAGLE HOTEL

(Prop.: Tom Hamilton)

WORTHINGTON :: GUINNESS

DEVENISH BEERS :: BASS

REGENT ST., SWINDON

LITTLE & CO. LTD.

The Name Linked with Service
and Value

*The Popular Ladies' and Men's
Complete Outfitters*



31-32 FLEET ST., SWINDON

Telephone 22831

NEXT MATCH . . .

DIVISION III

SWINDON TN. v. NEWPORT C.

TOMORROW, SATURDAY, APRIL 21st, 1962

Kick-off 3 p.m.

Dr. BARNADO'S HOMES

Take care of 7,500 needy children and
still depend on public support

Send your donation to—

**Barnardo House, Stepney
Causeway, London, E.1.**

Donated by: Mrs. S. Mutch, 60
Cricklade Road, Swindon

LEESE, INC & Co. Ltd.

Incorporating BARKER & CO.

*Mineral Water and
Squash Manufacturers*



LANDSOWN RD., SWINDON

Telephone 22744/22320

HULFORD MOTORS Ltd.

SELF DRIVE HIRE

Fleet of 1962 Fords
Populars - Anglias - Consuls

SHRIVENHAM ROAD

(200 yards from Football Ground)

Phone 4934

LARGE CAR PARK AVAILABLE

For Quality
FLOWERS, FRUIT & VEGETABLES
Also FROZEN FOODS

**CLARKE'S
of Old Swindon**

Proprietors: A. G. G. & J. A. W. HUNT

64 DEVIZES ROAD - SWINDON

'Phone: 22337

ORDERS DELIVERED

SWINDON TOWN FOOTBALL COMPANY LIMITED

Registered Office: COUNTY GROUND, SWINDON

Directors:

Mr. W. J. CASTLE (Chairman)

Mr. H. E. LANE (Vice-Chairman)

Mr. B. T. HAMILTON (Hon. Treasurer)

Messrs. C. CHANDLER, J.P., J. DAVIES,

R. FRICKER, C. J. GREEN, F. PLYER, H. WILLIAMS and K. H. WILMER

Manager: B. J. HEAD.

Secretary: R. A. MORSE

VOL. 12

FRIDAY, MAY 20th, 1962

No. 26

Club Notes

Our three days' tour in the Midlands produced three points from two away games. Two goals for, and one against, a splendid performance, especially as O'Hara, our goalkeeper, was injured in the first of the two games, at Notts County. He has cracked two ribs, and is an in-patient at St. Margaret's Hospital, for at least a week.

We were fortunate that we could call on the services of Turner, a player from Dorchester Town, now serving in the R.A.F. He was urgently sent for, and travelled to Port Vale on Friday. He has played many good games for the Reserves, and in this, his first appearance with the Senior side, performed splendidly.

Not an easy game for any player to make his debut, as our lads had played on the previous Thursday evening, and the actual playing pitch at Port Vale is very large indeed.

Many spectators thought the man who started the move for our opponents' goal was well offside when he received the ball. However, our run continued, and in the last twenty games we have only been defeated on two occasions. March 10th, 0-4 at home by Bristol City, and March 19th, 0-2 away at Halifax. May the successes continue. At present we occupy ninth position in the league. Quite the highest for a long time. One which augurs well for the future and our young team.

THE WALCOT CHEMIST

WIDE RANGE OF COSMETICS, PERFUMES,
BABY NEEDS AND PHOTOGRAPHIC GOODS

10 SUSSEX SQUARE - WALCOT
TEL. 6680

M. J. REYNOLDS

Grocer

152/154 CRICKLADE ROAD
5479 SWINDON 5479

COOKED HAM OUR SPECIALITY

WATSON'S CENTRAL NEWSAGENCY

LTD.

Swindon's Leading Wholesaler

1 WELLINGTON STREET, SWINDON
Tel. 22049

L. WOLLEN

OFF LICENCE

WINES & SPIRITS

Arkell's Ales and Stout

373 Cricklade Rd., Swindon

Deliveries Daily

Phone 3508

SWINDON TOWN F.C. SUPPORTERS' CLUB

THE OFFICIAL HANDBOOK FOR 1962 IS NOW ON SALE.

PRICE: ONE SHILLING. THESE MAY BE OBTAINED AT

THE SUPPORTERS' CLUB ROOM OR FROM ANY

MEMBER OF THE COMMITTEE.

FOR ALL YOUR ANGLING NEEDS
CONSULT

FRANK WOODWARD

Swindon's Fishing Tackle Specialist

25 HAVELOCK ST., SWINDON
PHONE 3879

WE ARE SPECIALISTS IN —
OUTSIDE CATERING AND LICENSED BARS
FOR WEDDINGS, FETES, SPORTS DAYS, etc.

THE MASONS ARMS HOTEL

31 HIGH STREET - SWINDON 3522

H. E. LANE

(REGENT STREET) LTD.

The Pork Sausage Specialists

117 Victoria Road, Swindon

Telephone: 22336

COMLEY'S

Modern Music Centre

26 HAVELOCK ST., SWINDON

RECORDS - MUSIC - INSTRUMENTS

Top Twenty "Pops" always in stock
and wide selection of Jazz and Classics

PERSONAL SUPERVISION

Phone 3874

TORQUAY UNITED ASSOCIATION FOOTBALL CLUB LTD.

1. Formed in 1921 by the amalgamation of two prominent local clubs—Torquay Town and Babbacombe.
2. Played in the Southern League until elected to Football League in 1927—Division 3 (Southern Section).
3. Have only had to apply for re-election once — end of first season, 1927-28.
4. Highest final position in the Football League — Division 3 (Southern Section) — was equal first with Ipswich Town 1956-57, but second on goal average.
5. Relegated to Fourth Division on formation of that Division, Season 1958-59.
6. Gained promotion to Third Division of Football League 1959-60 by finishing in third place (first four promoted).
7. Longest run in the F.A. Cup is to the 4th Round twice; one in 1949-50 and 1954-55.
8. Heaviest defeats were 2-10 against Fulham on 7th September 1931, and against Luton Town on 2nd September 1933.
9. Biggest win is 9-0 against Swindon Town on 8th March, 1952.
10. Record gates are 16,388 for a Football League match (Plymouth Argyle on 7th October 1950) and 21,736 for an F.A. Cup Tie (Huddersfield Town on 29th January, 1955).
11. The Reserve Team played in the Western League until the First Team obtained admission to the Football League in 1927, when the Reserves took over the Southern League fixtures for the 1927-28 Season.
12. Reserves remained members of the Southern League until joining the newly-formed South Western Football League for Season 1951-52.
13. Reserves were Champions of South Western League 1951-52 and 1952-53.
14. Reserves won South Western League Challenge Cup 1952-53 and 1954-55; Runners-up 1951-52.
15. Reserves resigned from South Western League at end of 1954-55 Season and joined the Western Football League.
16. Reserves winners of Division 2 of Western Football League 1955-56.
17. Reserves winners of Western League (Division I) and Western League Professional Cup 1959-60.
18. Club won Devon Senior Cup 1921-22, 1946-47 and 1959-60; the first time by the First Team, the second time by the Reserves and the third time by the "A" Team.
19. Club won Devon Professional Championship 1946-47, 1947-48, 1948-49 and 1957-58, and held it jointly with Exeter City 1954-55.

Our Visitors

Bettany, C. (R.B.)

Born Leicester. Signed from Birmingham City in April 1957. Formerly with Crewe Alexandra. Height 5ft. 10in. Weight 12½st.

Cox, C. (I.F.)

Born Arley, Nr. Coventry. Signed in December 1957 from Birmingham City, his only other League club. Height 5ft. 8in. Weight 10st. 12lb.

Hancock, D. (R.H.)

Born Exeter. Signed by Torquay in December 1958 after service with Plymouth Argyle. Height 5ft. 8in. Weight 10st. 7lb.

Marsh, B. (Goalkeeper)

Born Dundee. Signed in July 1959 after service with Charlton and Luton Town. Height 5ft. 11½in. Weight 12st.

Mills, D. (I.F.)

Born Bramley. Re-signed in December 1952 after having been with Q.P.R., Torquay United, Cardiff and Leeds in that order. Height 5ft. 9½in. Weight 10st. 5lb.

Northcott, T. (C.F.)

Born Torquay. Brother of George; re-signed by Torquay in November 1957 after having been with Torquay, Cardiff and Lincoln. Height 5ft. 8½in. Weight 11½st.

Pym, E. (O.L.)

Born Torquay. Signed as professional in September 1957, after having played for the club as an amateur. No other League club. Height 5ft. 7in. Weight 10st.

Smith, A. (C.H.)

Born Birkenhead. Signed in 1956 from Port Sunlight — a Liverpool amateur club. Height 6ft. Weight 12st.

Astall, G. (O.R.)

Born Horwich. Signed from Birmingham City in June 1961. Formerly with Plymouth Argyle. Height 5ft. 11in. Weight 11st. 10lb.

Spencer, R. (W.H.)

Born Birmingham. Signed from Darlington for a small fee in July 1961. Height 5ft. 9in. Weight 11st.

Arundel, F. (O.L.)

Born Plymouth. Signed for Torquay in August 1959. At present still on National Service. Formerly with Plymouth. Height 5ft. 6in. Weight 10st.

Baxter, L. (O.R.)

Born Leicester. Joined Torquay from Gillingham in September 1957 after service with Northampton and Norwich City. Height 5ft. 11in. Weight 12st.

Eckersall, M. (I.F.)

Born Bury. Signed in October 1959, whilst on National Service. Formerly with Mossley F.C. in the Cheshire League. Height 5ft. 10in. Weight 11st.

Gill, M. (Goalkeeper)

Born Exeter. Signed in September 1956 from Southampton. Formerly with Portsmouth as an amateur. Height 5ft. 11in. Weight 12st.

Northcott, G. (C.H.)

Born Torquay. Signed pro. after playing as an amateur in October 1952. His only League club. Height 6ft. Weight 12st. 12lb.

C. Dunn & Son

BUILDERS & DECORATORS

Alterations, Renovations, Conversions
Plumbers and Sanitary Engineers
503 CRICKLADE ROAD Tel. 22522

FOR PAINTS OF GOOD QUALITY
H. S. HODGES & SONS
(SWINDON) LTD.

CRICKLADE ROAD - SWINDON
PHONE 22422

Dulux, Brolac, Friary, Valspar, Wallcharm, etc.

NOTTON'S CAFE

COUNTY ROAD

200 yards from Ground

RIGHT ON THE BALL

Harold Fleming

24 REGENT CIRCUS - SWINDON
Phone 22813



FOR ALL SPORTS EQUIPMENT
Also, Scout, Guide, Cub and Brownie Wear

OUR VISITORS—continued

Penfold, D. (L.B.)

Born Reading. Signed by Torquay in July 1959 from Reading, his only other League club. Height 6ft. 2in. Weight 12st. 10lb.

Rawson, C. (L.H.)

Born Langworth. Signed in August 1959. Previously with Notts. Forest, Sheffield United and Millwall. Height 5ft. 9in. Weight 11st.

Handley, B. (C.F.)

Born Wakefield. Signed in September 1960 from Aston Villa, his only other League club. Height 6ft. 1in. Weight 12st.

Laraman, P. (I.L.)

Born Rochester. Signed in July 1961 from Charlton Athletic, his only other League club. Height 5ft. 11in. Weight 10st. 10lb.

Rossiter, J. (R.B.)

Born Kingsbridge. A local boy signed on professional forms after one season as an amateur. Height 6ft. Weight 12st.

Griffiths, B. (I.L.)

Born Warrington. Apprentice pro., signed in August 1960. Height 5ft. 9in. Weight 11st.

GODDARD & Co.

Wholesale and Retail

WINE - SPIRIT - BEER
AND CIDER MERCHANTS

9 REGENT STREET, SWINDON
Telephone 22415

Also at
4 WINGATE PARADE, SWINDON

We are your **Main Distributors** for
VAUXHALL and **JAGUAR** cars
BEDFORD Vans and Trucks, etc.

Any make of Car or Truck
supplied - Used Vehicles a
specialised part of our
business.

SKURRAY'S
SWINDON

Telephone: 22266

H. HIBBERD LTD.

Plant Hire Contractors

TRACTORS and SCRAPERS
BULLDOZERS
DOTT SHOVELS
DIGGERS
ROAD ROLLERS

40 NEWPORT STREET, SWINDON

Telephone 6125

Swindon Bacon Curing Co. Ltd.

*Specialists in
Bacon, Pork & Cooked Ham*

50 FLEET STREET
SWINDON

Telephone: 22122

WARNES (Swindon) Ltd.

Electrical Contractors
Radio and Television

Contractors to:

SWINDON TOWN FOOTBALL CLUB

51/52 COMMERCIAL RD., SWINDON

'Phone 6346/7

160 COUNTY RD., SWINDON

'Phone 6346/7

9 SWINDON ST., HIGHWORTH

'Phone 379

7 CLIVE PARADE, SWINDON

'Phone 6346/7

H
O
U
S
E
F
U
R
N
I
S
H
E
R
S

MILLS & MER

SWINDON TOWN v. TORQUAY UN

SWINDON

RIGHT WING

Colours: RED SHIRTS

Turner

Wollen (2)

Morgan (4)

Owen (5)

Summerbee (7)

Hunt (8)

Smith

Referee—

Mr. K. Stokes
(Newark)



Pym (11)

Mills (10)

Northcott

Hancock (6)

Smith (

Allen (3)

Marsh

TORQUAY U

LEFT WING

These teams are subject

DAY RETURN TICKETS

On Weekdays and Sundays (services permitting), available in each direction by any train the same day. From Swindon Junction to:-

2nd Class

Bath Spa

7/6d.

Bristol (T.M.)

9/0d.

Weston-super-Mare

11/6d.

Other fares available. Ask for pamphlet B7/411, giving full information.

BRITISH RAILWAYS

Western Region

16-17 BRIDGE ST S

W. B. CARTER

Newsgent, Tobacconist and Confectioner

Large selection of Boxes of Chocolates
always in stock

CORONA, TIZER, DRINKS, etc.

Agents for Wall's Ice Cream

188/190 FERNDAL RD., SWINDON

Telephone: 3089

ENGLAND'S QUALITY
SERVICE

Your Car washed in un

THE INSTANT

6/- ANY MAKE —

Local Stati

MARLBOROUGH ROAD

SWINDON

QUEENS R

READING

Make your goal . . .

M'CILROY'S RESTAURANT

Top of the Catering League
COFFEE - LUNCHES - TEAS
Parties catered for.
Regent Street, Swindon. Tel. 5294

THE PLESSEY COMPANY Ltd.

After years of achievement have great expansion plans for the future.

TECHNICAL STAFF
CLERICAL STAFF
MANUAL WORKERS

are essential for this progress.

Interested persons please apply to the Personnel Department.

MERRICKS LTD.

DAY UNITED Kick-off 3 p.m.
NDON TOWN
SHIRTS, WHITE SHORTS LEFT WING

Turner

Trollope (3)

Owen (5)

Woodruff (6)

Smith (9)

Atkins (10)

Darcy (11)

Linesmen —

Red Flag —

Mr. R. D. Hastie
(Banbury)

Yellow Flag —

Mr. H. N. Lye
(Weston-super-Mare)

Northcott (9)

Cox (8)

Astall (7)

Smith (5)

Spencer (4)

Bettany (2)

Marsh

QUAY UNITED

are subject to alteration

RIGHT WING

T SWINDON

PHONE
5365

U
P
H
O
L
S
T
E
R
E
R
S
•
R
E
M
O
V
A
L
S

ALITY CAR WASHING SERVICE

in under 5 minutes by

NT CAR WASH

CE — 4 WASHES £1

cal Stations:

EENS ROAD
READING

QUEENS ROAD
BRISTOL

INSIST ON

Garrard EQUIPMENT



For Superb Tape and Record Playing



Fitted by the World's leading manufacturers.

WILSONS (SWINDON) LTD.

BUILDERS OF
MODERN ATTRACTIVE HOUSES
AND BUNGALOWS

All enquiries to Head Office

90 COMMERCIAL ROAD
SWINDON 6361-3

ONE QUALITY ONLY—THE BEST!
FRESH SUPPLIES DAILY

York Road Fisheries

SWINDON

WET, DRY or FRIED Tel.: 3680

Rent your T.V. - Washing Machines
Spin Dryers - Electrical Installations
from

D. V. HOLLAMBY LTD.

138 High St., Wootton Bassett, Wilts.
Telephone 295

ALL LEADING MAKES IN STOCK

DEMPSTER ENTERPRISES, offer a
modern fleet of 4 and 6 seater self-
drive hire cars, for your pleasure and
convenience. For advance bookings
apply:-

Dempster Enterprises

38 VICTORIA ROAD, SWINDON

Tel. 6460

Howard Autos, Swindon's Main Cotton
Motor Cycle distributors always have a
good selection of guaranteed used cars
for you to choose from.

HOWARD AUTOS

134/5 MANCHESTER ROAD

Tel. 6603

and at 3 WELLINGTON STREET, SWINDON

HALF-TIME

JACKPOT DRAW

TODAY'S WINNING NUMBERS WILL BE ANNOUNCED AT
HALF-TIME.

The following will assist you to record the numbers and prizes as
announced.

1st PRIZE	No.	Amount £.....
2nd PRIZE	No.	Amount £.....
3rd PRIZE	No.	Amount £.....
4th PRIZE	No.	Amount £.....

Winning numbers will also be published in "Evening Advertiser"

'BAILEY'S'

2 Cheney Manor Road - Swindon

NEWSAGENT :: TOBACCONIST
CONFECTIONER

Personal Attention and Satisfaction
always assured.

MEET YOUR FRIENDS FOR AN
ENJOYABLE EVENING AT

THE KINGSDOWN INN

(Host A. W. Vann)

FULLY LICENSED - ARKELL'S BEERS
SNACKS, Etc.

Stratton St. Margaret

Tel. 3283

A. WHEELER & SON

330 CRICKLADE ROAD

PHONE 22095

FOR QUALITY COALS
AND PROMPT SERVICE

Lowest Terms for Self Drive Cars

Free Deliveries - Glasses loaned free
for your Wines, Spirits and Beers

115 CRICKLADE ROAD

"The Corner Off Licence"

Ring 4711 or call at

Supporters' Club Notes

We have been grateful to the Directors for allowing us the use of this page in the programmes throughout the season to enable us to report on progress or otherwise, to publicise our work and occasionally to air a grievance.

It was, therefore, ungracious of the writer to overlook the fact that there was a match on Monday last, and fail to supply the necessary notes for publication. We apologise to the Editor of the Programme, and to any, who, at this late stage of the season, may still read this page.

This Club has now been in existence for thirty-one years, which, including wartime inactivity, means approximately a quarter of a century's work for the Football Club.

Even now, some of the original members of the Committee and a few of the people who were amongst the first helpers, are still assisting in various ways.

Some of the old records are interesting now, and give an indication of the economic changes, both in the football world and in wider spheres.

The Club was formed at a time when unemployment, industrial unrest and distress were widespread, and the first duty of the Committee was to raise funds to pay summer wages to the players in 1931.

In the years before the War, the Committee felt that it was a great

achievement to make a donation of £1,000 during the course of a season, as, indeed it was, in the light of conditions then prevailing.

The major pre-war achievement was the raising of funds to build the stand at the Town end of the ground, the total cost of which was £4,300.

Other objects brought to a successful conclusion were the concreting of the terracing, and the erection of the shelter, since demolished, on the south side of the ground. This served a useful purpose until the new double-decker stand was erected.

Nowadays, it is possible to make donations on a larger scale, but the expenses of the Football Club have increased proportionately, so that the urgency to raise funds remains as great as ever.

We have greatly appreciated the support accorded to our efforts during the season. We anticipate that our work will remain as necessary as ever in the year ahead, and hope for a continuation of the patronage which we have been privileged to receive in the past.

Perhaps we may conclude these notes with a brief tribute to our lady Committee Members and helpers, who have worked unceasingly and have assisted the work of the Club in a variety of ways during the course of the season.

1961

Aug. 19	Portsmouth	H	1-3
21	Coventry City	A	1-2
26	Crystal Palace	A	1-3
29	Coventry City	H	3-3
Sept. 2	Bournemouth	H	1-1
4	Queen's Park R.	A	1-6
9	Watford	A	0-2
16	Hull City	H	1-1
19	Barnsley	H	1-1
23	Northampton T.	A	2-1
27	Barnsley	A	2-6
30	Lincoln City	H	4-0
Oct. 3	Grimsby Town	H	0-0
7	Brentford	A	0-1
10	Grimsby Town	A	1-0
13	Reading	H	4-1
17	Queen's Park R.	H	0-0
21	Bristol City	A	3-5
28	Bradford	H	3-2
Nov. 4	(1) Kettering T.	H	2-2
8	Kettering T.	A	0-3
11	Shrewsbury Tn.	H	1-2
18	Peterborough U.	A	2-3
25	(2)		
Dec. 2	Newport County	A	2-2
9	Southend U.	H	0-0
16	Portsmouth	A	2-2
23	Crystal Palace	H	5-0
26	Halifax Town	A	P

1962

Jan. 6	(3) Notts County	A	P
13	Bournemouth	A	0-0
20	Watford	H	3-1
27	(4) Port Vale	H	P
Feb. 3	Hull City	A	1-0
10	Northampton T.	H	2-2
17	(5) Lincoln City	A	2-2
23	Brentford	H	5-2
Mar. 2	Reading	A	1-1
10	(6) Bristol City	H	0-4
17	Bradford	A	2-2
19	Halifax Tn.	A	0-2
23	Notts County	H	1-0
31	(S.F.) Shrewsbury	A	3-1
Apr. 7	Peterborough U.	H	3-2
12	Notts C.	A	1-0
14	Port Vale	A	1-1
16	Halifax Tn.	H	6-0
20	Torquay Utd.	H	
21	Newport County	H	
23	Torquay Utd.	A	
28	Southend Utd.	A	
30	Port Vale	H	

May 5 (Final)

1961

Aug. 22	Leyton Orient	H	0-0
Sept. 6	Southend Utd.	A	1-3
13	Portsmouth	A	1-7
20	Bournemouth	A	0-3
26	Birmingham	H	1-1
Oct. 4	Aldershot	A	1-2
10	Watford	H	1-3
Nov. 1	Millwall	A	0-1
7	Fulham	H	1-4
14	Southampton	H	2-0
22	Coventry City	A	2-1
29	Reading	A	1-3
Dec. 5	Brighton	H	4-2
12	Brentford	A	3-1
19	Charlton	H	P

1962

Jan. 3	Chelsea	A	P
9	Chelsea	H	0-0
17	Leyton Orient	A	1-2
23	Portsmouth	H	2-0
31	Birmingham City	A	1-1
Feb. 6	Bournemouth	H	3-2
13	Watford	A	1-3
20	Aldershot	H	5-0
26	Queen's Park R.	A	P
Mar. 6	Millwall	H	3-1
14	Fulham	A	1-1
20	Southend Utd.	H	3-1
28	Southampton	A	0-0
Apr. 2	Chelsea	H	4-0
3	Coventry City	H	1-2
10	Reading	H	2-0
17	Brighton	A	
23	Brentford	H	
26	Q.P.R.	H	
28	Charlton	H	
May 2	Charlton	A	

The Rendezvous of all Sportsmen . . .

THE CROWN INN

(Host: Frank Plyer)

Arkell's Best Ales : Fully Licensed
Snacks, etc.

STRATTON ST. MARGARET Tel. 2339

SUPPORT YOUR HOME

CIVIL DEFENCE

Plays a vital part in saving lives

Particulars:

CIVIC OFFICES - SWINDON

WIN OR LOSE !
THE FOOD IN THE

China Restaurant

IS BEST

* * *

107 COMMERCIAL ROAD

SWINDON 6888

Open Daily 12 noon - 11.30 p.m.

For all Chinese and English Dishes

TICKETS

Tickets for seats in the Stand for Division III matches may be booked in advance on application to the office, or, by post. Postal applications should be accompanied by a remittance and stamped, addressed envelope.

Please note the new prices for Stand tickets.

NEW STAND

Blocks 'A' and 'E'	4/6d.
Blocks 'B' and 'D'	5/6d.
Block 'C'	6/6d.

OLD STAND

Blocks 'F', 'G' and 'I'	4/-d.
Block 'H'	5/6d.

COATE GARAGE



THE ALCOHOL FUEL

REPAIRS
SERVICING
TYRES



OVERHAULS
REBORING
WELDING

Props.: E. V. & W. H. Mattick

MARLBOROUGH ROAD, SWINDON

For something a little different, try

DON JONES

HIGH CLASS CONFECTIONER
AND TOBACCONIST

Always a good selection of
SUCHARDS' - TOBLER
TERRY'S

Quality Chocolates and Presentation
Boxes

112 COMMERCIAL ROAD

6012

SWINDON

6012

Typewriters from £10

FULLY GUARANTEED

**DOBELL SHEARMAN
& CO. LTD.**

26 HIGH ST. & 33 FARINGDON RD.,
SWINDON Telephone 4961

Only 800 yards to your Dream Car—

NEW ALPHA MOTOR Co.
(SWINDON) LTD.

QUEENS DRIVE, SWINDON

Tel. 5062/63

FOR TOP QUALITY USED CARS

Open 7 days per week from 7 a.m. to 10.30 p.m.
Servicing for all makes of cars

DIVISION III

	P.	W.	D.	L.	F.	A.	Pts.
Portsmouth	41	25	9	7	80	39	59
Grimsby Town	41	24	6	11	68	49	54
Bournemouth	42	18	16	8	64	43	52
Bristol City	42	22	6	14	87	65	50
Peterborough United	41	22	6	13	95	77	50
Queen's Park Rangers	40	20	9	11	98	70	49
Northampton Town	42	19	10	13	80	50	48
Reading	41	19	8	14	67	62	46
Swindon Town	41	14	15	12	72	67	43
Bradford	40	18	7	15	71	67	43
Port Vale	41	15	10	16	58	53	40
Hull City	41	16	8	17	57	52	40
Coventry City	41	15	10	16	58	61	40
Notts County	41	16	8	17	63	67	40
Watford	42	14	12	16	59	65	40
Crystal Palace	42	14	11	17	81	77	39
Southend United	42	11	16	15	52	63	38
Halifax Town	39	14	8	17	58	73	36
Shrewsbury Town	43	12	11	20	67	80	35
Barnsley	41	11	11	19	63	84	33
Lincoln City	40	8	15	17	49	72	31
Brentford	40	12	7	21	46	81	31
Torquay United	41	12	5	24	67	96	29
Newport County	43	7	8	28	45	92	22

Chappell's Funeral Service

(Fun. Dir.: A. A. Winchcombe)

196 COUNTY ROAD
SWINDON

24 hour Service Tel. 6073

Your local "TEAM" for RENAULT
Sales and Service

CORONATION CAR SALES

67/68 VICTORIA ROAD

Telephone 4964

**SEA VIEW HOLIDAY
CAMP**

YOUR HOST — Mr. BENNETT

**WYKE REGIS - WEYMOUTH
Dorset**

"COAL!"
"COAL!"
"COAL!"

J. WILMER

ST. MARGARET'S ROAD, SWINDON

Telephone 22535

MEET YOUR FRIENDS AT THE

Southbrook Inn

(Hosts: Mr. and Mrs. Jack Scutts)

FULLY LICENSED
CLINCH BEERS, ETC.

**SOUTHBROOK STREET, SWINDON
Tel.: 5837**

STOP!

LOOK!

NU-HOMES

For all Household Fitments

Paints - Emulsions - Wallpapers
Kitchen Units and Bathroom Suites,
etc.

176a Manchester Road

TELEPHONE 22178

FORTHCOMING MATCH . . .

FOOTBALL COMBINATION

SWINDON TN. v. BRENTFORD

MONDAY NEXT, APRIL 23rd, 1962

Kick-off 3 p.m.

**BRITANNIA
MOTORS**

Proprietors: A. GODWIN

205-206 RODBOURNE ROAD
SWINDON PHONE 5303

- TYRES
NEW AND REMOULD
CASH OR EASY PAYMENTS
- ACCESSORIES
- QUICK SERVICE AND REPAIRS
AT SWINDON'S MOST MODERN
LUBRICATION BAY AND
WORKSHOP

*For High Class
Central Heating, Plumbing
Painting and Decorating
Electrical Installations
and Repairs*

NORTH WILTS

Sanitary & Heating
Co. Ltd.

NEWPORT ST., SWINDON

'Phone: 5373/4

Always at your service

L. BIBBY

For all Types, Rags, Iron and Metal,
etc. Spot Cash Paid. Please Telephone
2101 and our van will call.

THE PADDOCK, ERMIN STREET
STRATTON ST. MARGARET

Walcot Greengrocer

G. E. STAMMERS



**1 SUSSEX SQUARE
SWINDON**

SWINDON **22526**

*CAN ALSO BE YOUR LUCKY NUMBER !!!
if you ring*

HOLMES & LUCAS

14A REGENT STREET :: SWINDON

for all your

TELEVISION, RADIO AND ELECTRICAL REQUIREMENTS

LUCKY PROGRAMME

Please retain your programme. An announcement will be made at half-time of two numbers and the holders will be given a stand seat at the next Division III game. The persons who purchased the programmes bearing the winning numbers should call at the office after the game and claim their seats.

2826

FRIED FISH AND CHIPS

Always Fresh - Always Hot

WALCOT FISHERIES
Sussex Square

Wet fish and frozen foods all refrigerated display.

Telephone Swindon 22731

6 REGENT CIRCUS (NEAR G.P.O.)

Main Booking Agents for Millers Coaches
Agents for Wessex School of Motoring
Newsagents : Tobacconists : Confectioners
A. J. D. WOODHOUSE & A. SMITH

HATTON'S NEWSAGENCY

For Insurance or Hire Purchase
CARS - CARAVANS - MOTOR CYCLES, etc.
Consult

D. & H. HENTY LTD.

54 COMMERCIAL RD., SWINDON
SWINDON 5258

PANKHURST
The Palace, Gorse Hill,
Swindon

**MOTOR CYCLE - SCOOTER AND
THREE-WHEELER SPECIALISTS**

Open Mon. to Sat. 9 a.m. - 8 p.m. Phone 5466

MORGAN'S

IRONMONGERS

C.A.S.M.S. (Swindon) Ltd.

2 SUSSEX SQUARE, WALCOT, SWINDON
also at 163 RODBOURNE ROAD Tel. 22516

Paraffin services to all areas town and country
Everything for the home
Precision Tools for Engineering Trade,
Tools for all trades

Maylott Studios

For GROUP & SPORT Photographs
OFFICIAL PHOTOGRAPHER TO
SWINDON TOWN FOOTBALL CLUB

31 FARINGDON RD. Tel. 22792